

Child Support



Free Kansas Legal Services: Child Support Forms and Live Chat Assistance

[From the IRS: Am I eligible to claim the child and dependent care credit?](#)

Kansas Legal Services provides forms as a service to low income Kansans and to assist overloaded Kansas courts.

Forms are easy to use, interactive forms that will produce documents necessary for filing or responding to legal actions in Kansas district courts. The child support forms available are listed below.

- Please note, it is always advisable to talk to a lawyer before proceeding in a court case on your own. [Please read our important warning.](#)

Live Chat is right here

Find **Live Chat** in the righthand corner of this page **if you need help filling out your form.** Please note: **Live Chat** does not provide legal advice. Just click on the icon in the bottom righthand corner of this page.


Live Chat is generally available Monday through Friday from 8:30 a.m. to 4:30 p.m. You can leave a message if **Live Chat** is not available. You will receive a reply by email within two business days.

Check Out [Frequently Asked Questions](#) About Child Support

Child Support Free Legal Forms

NOTICE:

When using these online forms, please sign in and create an account because you need to save your answers often while completing the forms.

-  [Child Support Worksheet](#)
 - Use this Kansas Legal Services interactive form when the combined income of both parents is less than \$50,000.
 - This is a free service of Kansas Legal Services.

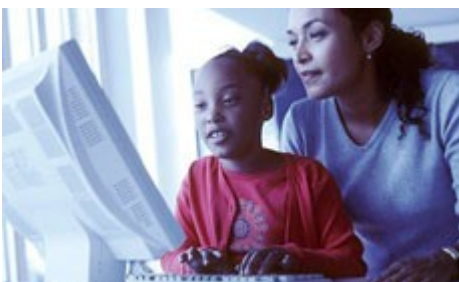
NOTE: If the combined income of both parents is more than \$50,000, you will have to research finding a worksheet from another source.

- [INSTRUCTIONS FOR PRO SE MOTION TO ESTABLISH PARENTING TIME.pdf](#)
 - This instruction sheet will assist you in obtaining a hearing to establish parenting time in your case.
 - A hearing cannot be held until your motion has been filed and all the steps have been completed.
- [INSTRUCTIONS FOR PRO SE MOTION TO ENFORCE PARENTING TIME.pdf](#)
 - This instruction sheet will assist you in obtaining a hearing to enforce the court-ordered parenting time that has been set forth in your case.
 - A hearing cannot be held until your motion has been filed and all the steps have been completed.
- [INSTRUCTIONS FOR PRO SE MOTION TO MODIFY PARENTING TIME.pdf](#)

- This instruction sheet will assist you in obtaining a hearing to modify the court-ordered parenting time that has been set forth in your case.
- A hearing cannot be held until your motion has been filed and all of the steps have been completed.
- **i** Modification of Child Support motion
 - Kansas Legal Services Interactive interview form
 - Requires that you have completed a Child Support Worksheet BEFORE you begin the interview.
 - If you have already filed a motion for modification of child support without using our interview form and need a final order, those forms are available [HERE](#).
- [Child Support Worksheet](#) and [Domestic Relations Affidavit](#)
 - Use the Kansas Judicial Branch worksheet and schedules when the combined income of both parents is \$50,000 or more.
- **i** [Request to Waive Filing Fees](#) (Kansas Legal Services)

- **Code for Care of Children**
- **i** [Motion for Interested Party Status](#) (Kansas Legal Services)
- [Preliminary Matters](#), [Commencement of CINC Action](#), [Adjudicatory Procedure](#), [Dispositional Procedure](#), [Post-Dispositional Procedures](#), [Termination of Parental Rights](#), [Appeals](#), [Indian Child Welfare Act Forms](#) (Kansas Judicial Council)

Check out our [All About Kansas Divorce](#) page.



What you need to use these forms

WORD PROCESSING PROGRAM:

- The interactive court forms download for printing in Rich Text Format (.rtf), which can be opened in any word processing program, such as Microsoft Word.
- If you do not have a word processing program, you can [download WordViewer here for free](#) so that you can be sure that your document is easy to read.
- Make sure your computer chooses a word processing program to download the documents or you may get errors or "gibberish."

NOTE TO USERS OF CHROME and FIREFOX:

- The backspace button does not work to delete or modify answers in these interactive interviews.
- You must use arrows or your mouse to highlight the information you need to change. Then use the delete key to remove letters, before you can change information. This problem is not experienced in Explorer.

For more help with these free legal forms, visit our [Frequently Asked Questions](#).

Check out our Free Legal Forms page.



Last updated on August 29, 2024.

[Child Support](#)

Files

[INSTRUCTIONS FOR PRO SE MOTION TO ESTABLISH PARENTING TIME.pdf](#)

[INSTRUCTIONS FOR PRO SE MOTION TO MODIFY PARENTING TIME.pdf](#)

[2-11-18 INSTRUCTIONS FOR PRO SE MOTION TO ENFORCE PARENTING TIME_0.pdf](#)

[Parenting Time Calculator.xlsx](#)

Print

Table of Contents

NEWS

News & publications

The news about recent activities for needed peoples.

[More News](#)

30 Oct 2024



Job Opportunities at Kansas Legal Services

ATTORNEY - EMPORIAKLS - Emporia seeks a staff attorney to provide general legal...

[Continue Reading](#)

22 Oct 2024



A Kansas legal nonprofit makes a big economic impact with pro bono expungement help

From KCUR FM 91.5 Up to Date, October 21, 2024 By Steve Kraske, Zach...

[Continue Reading](#)

Our Partners

LSC's support for this website is limited to those activities that are consistent with LSC restrictions.

